

**NSK** CREATE IT.

# A LEAP TO THE NEXT STAGE

**NEW** **S-Max M Series**  
Air Turbine

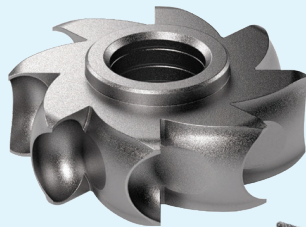


## MORE POWERFUL

The new rotor design is optimised using a rotating air flow simulation, resulting in 26W of power through the efficient use of air supply energy.

### 26W power

The internal structure is completely redesigned to achieve superior noise and vibration reduction, including the new 26W high power rotor.



- New state-of-the-art rotor design
- Significant 6W boost in power
- Trusted and proven Clean Head System
- 25% harder, light weight ceramic bearings
- Push button chuck
- Easy cartridge replacement due to barrel type design
- Facilitates more intricate operations.
- Elegant, slim design
- Quattro Spray System.



### Standard Head - NSK Couplings

	MODEL	ORDER CODE	POWER	RRP
Optic	S-Max M900L	P1254	26W	<b>\$1,279</b>
Non-Optic	S-Max M900	P1256	26W	<b>\$1,209</b>



### Miniature Head - NSK Couplings

	MODEL	ORDER CODE	POWER	RRP
Optic	S-Max M800L	P1253	23W	<b>\$1,279</b>
Non-Optic	S-Max M800	P1255	23W	<b>\$1,209</b>

## POWER INCREASE

	MODEL	POWER		MODEL	POWER
CURRENT	S-Max M500L	18W	NEW	S-Max M800L	23W
	S-Max M500			S-Max M800	
	S-Max M600L	20W		S-Max M900L	26W
S-Max M600	S-Max M900				

### Coupling Options

		Standard Head		Miniature Head	
BRAND		MODEL	ORDER CODE	MODEL	ORDER CODE
Ka-Vo*	Optic	M900KL	P1258	M800KL	P1255
	Non-Optic	M900K	P1259	—	—
W&H*	Optic	M900WL*	P1266	M800WL*	P1265
	Non-Optic	M900W	P1287	—	—
Sirona*	Optic	M900SL	P1262	M800SL	P1261
Bien-Air*	Optic	M900BL*	P1264	M800BL*	P1263

\*Compatible turbines with integral LED.

All prices quoted include GST.

**NSK Oceania Pty Ltd** [www.nskoceania.com.au](http://www.nskoceania.com.au)

Product Information | Technical Support | Freephone: 1300 44 33 21 (Australia) Email: [info@nskoceania.com.au](mailto:info@nskoceania.com.au)

**NSK** CREATE IT.

# A LEAP TO THE NEXT STAGE

**NEW**

## S-Max M Series Contra-Angle



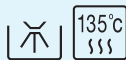
### TOUGHNESS

The S-Max M series contra-angles have dramatically improved durability, and feature an updated internal body design and chuck mechanism.

### DURABILITY

#### Updated internal body design

The all new internal design makes it even more durable, and it can withstand repeated autoclave sterilisation and the hostile environment of thermo-disinfection.



- All-new more durable internal design
- Withstands repeated autoclave sterilisation and thermo disinfection
- Trusted and proven Clean Head System
- 25% harder, light weight ceramic bearings
- Stainless steel handpiece body
- Satin-like finish and slimmer grip
- New chuck mechanism improves bur holding strength
- Tactile push button
- Quattro Spray System.



#### 1:5 Increasing

	MODEL	ORDER CODE	SPEED	RRP
Optic	S-Max M95L	C1023	200,000	<b>\$1,632</b>
Non-Optic	S-Max M95	C1026	200,000	<b>\$1,300</b>



#### 1:1 Direct Drive

	MODEL	ORDER CODE	SPEED	RRP
Optic	S-Max M25L	C1024	40,000	<b>\$1,252</b>
Non-Optic	S-Max M25	C1027	40,000	<b>\$878</b>



#### 4:1 Reducing

	MODEL	ORDER CODE	SPEED	RRP
Optic	S-Max M15L	C1025	10,000	<b>\$1,525</b>
Non-Optic	S-Max M15	C1028	10,000	<b>\$1,235</b>



#### Straight Handpiece - 1:1 Direct Drive

	MODEL	ORDER CODE	SPEED	RRP
Non-Optic	S-Max M65	H1008	40,000	<b>\$757</b>

All prices quoted include GST.

**NSK Oceania Pty Ltd** [www.nskoceania.com.au](http://www.nskoceania.com.au)

Product Information | Technical Support | Freephone: 1300 44 33 21 (Australia) Email: [info@nskoceania.com.au](mailto:info@nskoceania.com.au)